

**In Development
July 2015
Release**

Safilia

Safety Concept Design Tool

**Safety concept design tool for ISO26262
Based on 'Safety Concept Description Language' (SCDL)
Block diagram based design
Clearly share safety concepts between designers and developers**

Safilia is a safety concept modeling tool based on the 'Safety Concept Description Language' specification defined by Safety Concept Description Working Group (SCN-SG). Safilia has a graphical block diagramming feature that enables to share the information about safety concepts between designers and developers.

A modeling tool for Safety Concept Design using the Safety Concept Design Language (SCDL)

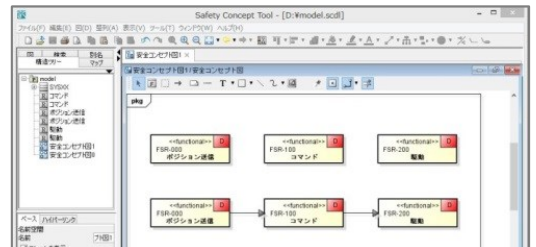
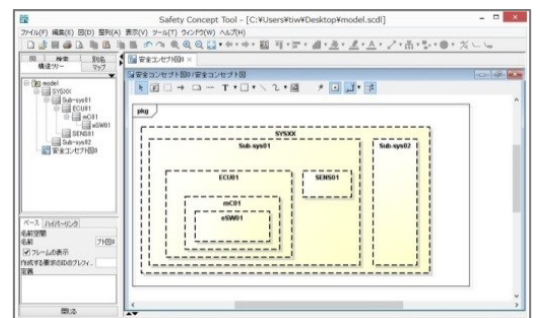
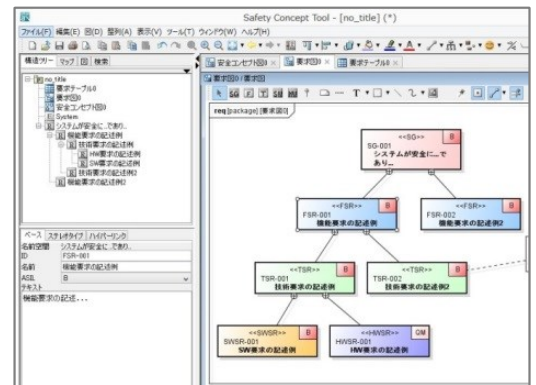
Safilia is a tool to assist Safety Concept Design using the Safety Concept Design Language (SCDL). It follows the specifications and standards decided by the Safety Concept Notation Study Group, which oversees the development of SCDL and promotes its diffusion.

Facilitate the sharing of Safety Concept Designs through a Block Diagram interface

Safilia includes a graphical editor to display Safety Concepts with block diagrams. By making the Safety Concepts and their inter-relations easier to visualize, it facilitates the expression and communication of critical Safety Designs to other Design or Development teams.

Safety concept definition features

- [First Version]**
 - Requirement architecture
 - Element (EL) architecture
 - SR's EL arrangement
 - Decomposition
 - FFI
 - Interface
- [Future Updates]**
 - Analysis
 - Software layer architecture
 - State transition connector/condition branch connector definition



Jointly developed by Japanese companies GAIO TECHNOLOGY & Change Vision

