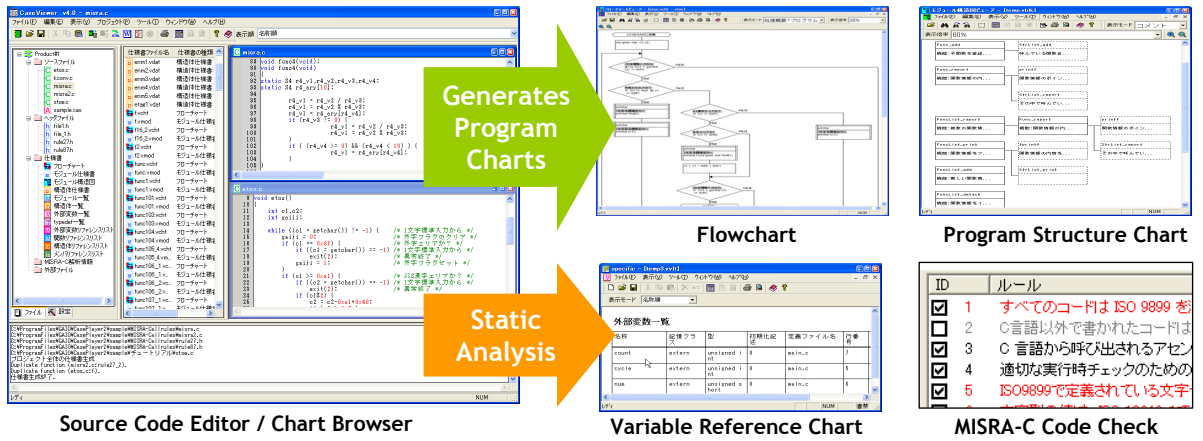


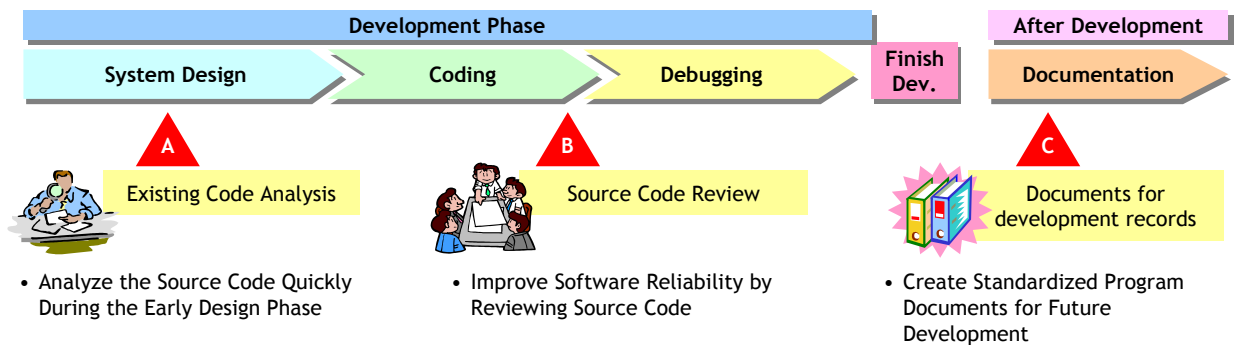
CasePlayer2 Ver.4

Creates program documents by analyzing source code.
Improves software reliability of newly developed source code
Aids understanding of existing software resources.

CasePlayer2 is an integrated reverse CASE tool that creates program charts, such as flowcharts, by analyzing the source code. It is equipped with a 'Document Browser' that manages the source code and creates program charts for quick review.



CasePlayer2 Application Examples



Examples of Customers



Integrated Reverse CASE Tool for Embedded Development

CasePlayer2 is an integrated reverse CASE tool that creates program charts, such as flowcharts, by analyzing the source code. It is equipped with a 'Document Browser' that manages the source code and creates program charts for quick review.

Quick Program Document Creation Through Code Analysis

CasePlayer2's analyzer is simple to use because it analyzes the actual source code logic, thereby requiring no special comments or '#pragma' descriptions for creating the charts. It is also very fast, capable of scanning 10,000 lines of C code in only 5 seconds.

Types of Output Charts

Flow chart, Module (Function) Specification Sheet, Module Structure Chart, Module (Function) List, Structure Specification Sheet, Structure List

Creates Reference Lists of External Variables and Structures

CasePlayer2 creates reference lists that show the position of external variable references and substitutions in the source code. This feature provides a quick reference and can be very useful in finding unexpected read/write external variable errors.

Types of Static Analysis Reports

Global Variable List, #typedef List, #define List, Global Variable Reference List, Function Reference List, Structure Reference List, Structure Member Reference List

Printer-Friendly and Output to HTML Options Available

CasePlayer2 can create printer-friendly charts thereby eliminating wasted space and minimizing the number of pages. Easy HTML file creation is also possible so that program documents can be accessed from a web browser.

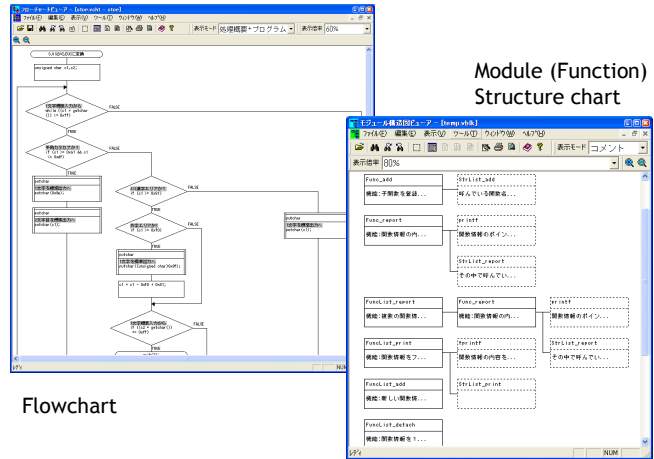
Supports MISRA-C Rule Check Function

CasePlayer2 can check C source code by using MISRA-C 1998 / 2004 rule sets with configurable options.

Matrix Analysis Reports

Cyclomatic Complexity, Myer's Interval, Maximum Nesting of Control Structures, Code Size, Estimated Static Path Count

Generates charts by analyzing target source code

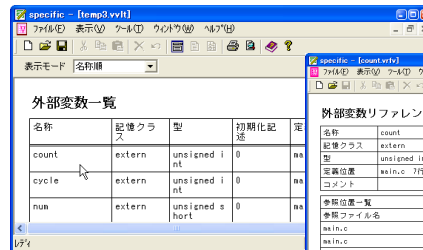


Flowchart

Module (Function) Structure chart

Reference Chart for Global Variables

Global variables list



Global variables reference list



MISRA-C Coding Rule Check

全項目	ID	ルール	表示色
<input checked="" type="checkbox"/>	1	すべてのコードは ISO 9899 を満たしてなければならず、拡張機能ま	なし
<input checked="" type="checkbox"/>	2	C言語以外で書かれたコードは、C言語とその言語のコンパイラ間でイ	なし
<input checked="" type="checkbox"/>	3	C言語から呼び出されるアセンブリ言語の関数は、インラインアセンブ	なし
<input checked="" type="checkbox"/>	4	適切な実行時チェックのための規定を調べるべきである	なし
<input checked="" type="checkbox"/>	5	ISO9899で定義されている文字や拡張表記のみ使用可能である	なし
<input checked="" type="checkbox"/>	6	文字型の値は、ISO 10646-1で、定義・文書化されたサブセットに制限さ	なし
<input checked="" type="checkbox"/>	7	3文字表記は使用してはならない	なし
<input checked="" type="checkbox"/>	8	多バイト文字や拡張文字列リテラルは使用してはならない	なし
<input checked="" type="checkbox"/>	9	コメントは入れ子であってはならない	なし
<input checked="" type="checkbox"/>	10	コード部はコメントアウトしてはならない	なし
<input checked="" type="checkbox"/>	11	識別子は 01 文字を超えてはならない	なし
<input checked="" type="checkbox"/>	12	あるネームスペースの識別子は他のネームスペースの識別子と同一の	なし

C source code by using MISRA-C 1998 / 2004 rule sets available

Main Features

- * 'Document Browser' that manages the source code and creates program charts for quick review.
- * Creates a variety of specification documents from source code including:
 - Module Structure Chart, Module Specification Sheet, Structure Specification Sheet, Flowchart, Module List, Structure List
- * Source Code Compatibility: ANSI compliant C, embedded C and assembly for numerous MPUs
- * Can save documents as MS-Word or HTML file formats
- * Can save charts as BMP or PNG file formats
- * Printer-Friendly option for document printing
- * Table of contents created automatically

System Requirements

- * IBM Compatible
- * USB or standard-size printer port
- * Windows 2000 / Windows XP / Windows Vista
- * Hard Drive: 30 MB free space
- * Microsoft Internet Explorer 5.5 or newer to view HTML format documents
- * Microsoft Word 2000 or newer to view MS-Word format documents